

THE CRUZ 3<sup>RD</sup> SEMI ANNUAL  
SURF, SKATE & HAWAIIANA EXPO  
Saturday, November 19, 2005  
8:00 am to 4:00 pm - 8 Hours Only!

# island + beach 3

Aviation Park Gymnasium

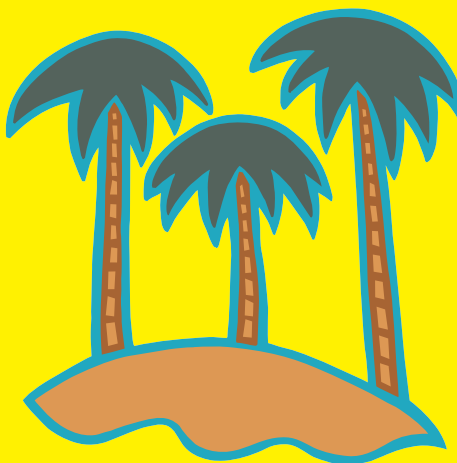
1935 Manhattan Beach Blvd., Redondo Beach, California

(Behind the Redondo Beach Center for the Performing Arts, North-East corner of Aviation Blvd. and Manhattan Beach Blvd.)

Please visit [www.Aloha-Cruz.com](http://www.Aloha-Cruz.com) for complete CRUZ ISLAND+BEACH 3 details

18,000 + square feet of indoor shopping featuring 60+ dealers of  
CONTEMPORARY & VINTAGE SURF, SKATE, & HAWAIIANA

- Collectibles Exhibits
- Free Hourly Raffle
- Unique Gifts
- Surfboards
- Tiki Items
- Clothing
- Home Decor
- Tropical Items
- Special Guests
- Posters & Photos



- Live Hawaiian Music
- Live Surf Music
- Silent Auction
- Skateboards
- Furniture
- Ukuleles
- Memorabilia
- Rattan & Koa
- Hawaiian Food
- Rare & New Books

Early Bird Shopping 8am-10am \$10.00 per person/children under 12 free  
General Admission 10am-4pm \$5.00 per person/children under 12 free  
There will be no admission after 3pm as our show closes promptly at 4pm

## Aloha-Cruz.com

email: [cruz@aloha-cruz.com](mailto:cruz@aloha-cruz.com) • phone: (310) 374-6224